

MERCY HEALTH
Behavioral Health
Telehealth Project &
Medsafe

Marcum & Wallace Memorial Hospital
Project HOME Network
CASAP – March 7-8, 2018 (London, KY)

Project HOME Network (Rural Health Network)

Community Collaboration Model

- Rural Health Network
- Established 2004
- Marcum & Wallace Memorial Hospital (Sponsoring Agency & Grantee)
- 15 Agencies (Recently added 3 additional members)
- 3 Counties (Estill, Lee & Powell)
- 34,000 Population
- Memorandum of Agreement (MOA)
- Bylaws
- Policies & Protocols

Behavioral Health Telehealth Project

Project HOME Network (PHN) Service Area

Project HOME Network - Location

Project HOME Network Counties

- Estill
- Lee
- Powell

Project HOME Network - Members

- **Marcum & Wallace Hospital (CAH)**
- Mercy Health Clinics (PB-RHC)
- White House Clinics (FQHC)
- Juniper Healthcare, Inc. (FQHC)
- Foothills Clinic (FQHC – Homeless)
- US Acute Care Solutions (Emergency Physician Group)
- Kentucky Homeplace (CHWs)
- Estill Medical Clinic, PSC (RHC)
- Westcare (Substance Abuse)
- Estill Development Alliance (Chamber of Commerce)
- Lee Health Department (Public Health)
- Estill Health Department (Public Health)
- Bluegrass.org (Behavioral Health)
- Hospice Care Plus (Palliative Care)
- Estill County EMS (ALS EMS Service)

Agencies (15 Members)

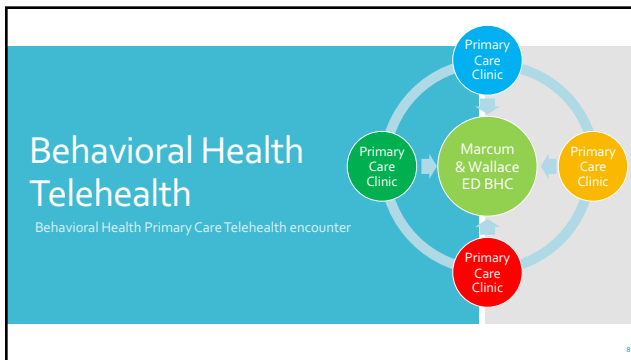
Project HOME Network - Programs

Community Collaboration Model

- Health Screenings/Transportation/Education (2004 – 2008)
- Emergency Department Navigation (2012 – 2016)
- Medication Therapy Management (MTM) program (2016 – Present)
- Behavioral Health Telehealth (BHT) (2017 – Present)

Project HOME Network - Current Grant Award

- US Department of Health & Human Services (HHS)
- Health Resource Services Administration (HRSA)
- Federal Office of Rural Health Policy (FORHP)
- Grant focus – Integrating behavioral health into the ED & primary care using Behavioral Health Consultants (BHC) and telehealth
- 3 year funding period 2017 – 2020
- \$300,000 annually - total \$900,000
- Behavioral Health Consultant (BHC) Position added each year for total of 3 BHC's added to the Project HOME Network service area



Project HOME Network - Behavioral Health Plan

- Place LCSW in the Emergency Department (ED) at Marcum & Wallace Memorial Hospital
- LCSW would work peak periods in ED
- Provide PHQ-9, SBIRT & AUDIT to ED patients
- Provide brief intervention & therapy to ED patients
- Schedule patients for traditional therapy
- Intake assessment for in-patient admissions
- ED grief care
- Family assistance
- Work in ED 4 days per week
- The fifth day is reserved for follow-up sessions
- LCSW will provide counseling and therapy sessions to Project HOME Network primary care clinics via Telehealth videoconferencing (Generally on demand)
- Year 2 - Place LCSW in Juniper Health Clinic (Mercy Employee Co-located)
- Year 3 - Place LCSW in an additional Project HOME Network Clinic (Mercy Employee Co-located)
- All LCSW's providing services to all PHN clinics as needed

Training & Education

- **SBIRT** (Screening Brief Intervention & Referral for Treatment) - Emergency Department Personnel
- **PHQ-9** (Patient Health Questionnaire 9) - Emergency Department Personnel
- **CSSRS** (Columbia Suicide Severity Rating Scale) – Emergency Department Personnel
- **AUDIT** (Alcohol Use Disorder Identification Test) - Emergency Department Personnel
- **NAPPI** (Non-Abusive Psychological & Physical Intervention) Emergency Department Personnel
- **Mental Health First Aid** Emergency Department Personnel & Emergency Medical Services

Training & Education

- Project HOME Network Behavioral Health model is patterned after the Cherokee Health model in Tennessee
- Cherokee Health - Behavioral Health Primary Care Integration Seminar (November 29-30, 2017)
- Cherokee Health – Behavioral Health Clinician (BHC) Boot Camp Seminar (April 5-6, 2018)
- Mercy Health Behavioral Health Institute (BHI) - St. Rita's Medical Center in Lima Ohio (January 9-10, 2018)
- Mercy Health Behavioral Health ED Access Center Lourdes Hospital –
- National Drug and Opioid Conference – Atlanta Georgia (April 2-5, 2018)

Behavioral Health Telehealth System

Grant Year 3

- All providers using telehealth
- Regional referrals
- Video conferencing

Medsafe

Medication Collection Receptacle



13

Medsafe

How to Become an "Authorized Collector"

- Authorized registrant must be registered to handle schedule II controlled substances
- Need to modify eligible DEA registration to become collector
 - Can request a modification online at <https://www.deadiversion.usdoj.gov/webforms2/spring/disposalLggin>
 - A collector can collect pharmaceutical controlled substances from ultimate users
- Need a collection receptacle
- Method of proper disposal of medication
 - "non-retrievable"

14

Medsafe

Definition of Ultimate User

- An ultimate user is defined by The Controlled Substances Act as a "person who has lawfully obtained, and who possesses, a controlled substance for his own use or for the use of a member of his household or for an animal owned by him or by a member of his household."



15

Medsafe

Collection Receptacle Regulations

- Only allow ultimate users and other authorized non-registrant persons to deposit the pharmaceutical controlled substances directly into the collection receptacles
- A collector should not require any person to provide any identifying information
- Controlled and non-controlled substances may be comingled
- Controlled substances collected by collectors may not be individually counted or inventoried.
- Collectors are not authorized to conduct take-back events

14

Questions

17

Contact Information

John Isfort, Director
Project HOME Network
Marcum & Wallace Memorial Hospital
60 Mercy Court
Irvine, KY 40336
606-723-2115 Ext. 8210
859-625-8104 (Cell)
jisfort@mercy.com



18
